



mfx2030/f560

The all-in-one document distribution centre



The new MFX2030 and F560 are multifunctionals built on the Network Gateway Platform (NGP).

In addition to the standard 80-sheet automatic document feeder found on the f560, the mfx2030 also features a A4 copy platen allowing it to scan books, journals and other bulky media.

Not only do these machines digitally route documents to network folders, e-mail addresses and FTP sites (without any additional hardware or software), they also allow the seamless integration of distribution and archiving applications. And all through a unique easy-to-use touchscreen.

This has real practical benefits for you, whatever your field. In many office applications, the Scan to FTP facility is the primary document sharing method. In the accounting and financial sectors, the ability to archive faxes and e-mails at the touch of a button has streamlined the new compliance procedures. The legal profession often needs to submit case information electronically. Our Scan to File feature converts hardcopy documents to PDF, JPEG or TIFF format in seconds. While medical practices find both the Scan to E-mail (for faxes) and the Card Copy (for medical cards) invaluable.

Take a long hard look at your own workplace. Couldn't you be more efficient? More cost-effective? More productive?



f560 –
with automatic
document
feeder



mfx2030 –
with copy platen
and automatic
document feeder



mfx2030/f560

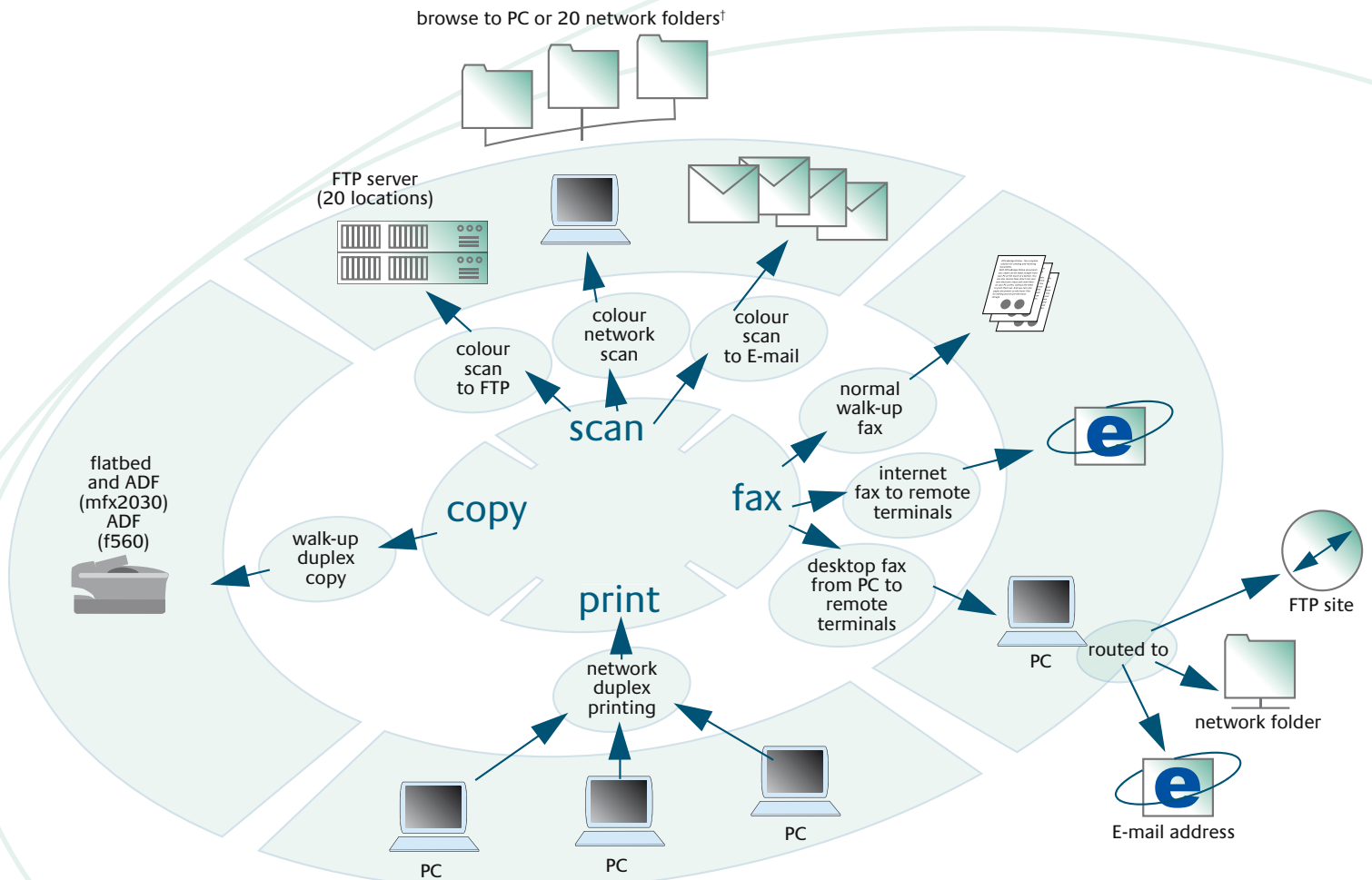
All the advantages of scanning hardcopy documents straight to folder, e-mail or FTP

Network Gateway Platform (NGP) machines are designed with a built-in affinity for the network.

NGP-enabled devices can:

Colour scan to network, FTP and e-mail. Perform internet, desktop and walk-up faxing. Print over the network. Install themselves on a network*. And locate contacts on a corporate directory server**.

And all without any additional hardware or software.



† Plus up to 300 with OfficeBridge interface

*DHCP compliant

**LDAP compliant



Scan to E-mail

- Intuitive QWERTY keypad
- Authentication by custom file name, subject line and text message
- Attach network/desktop files to your transmission, whatever the file format

Both colour and black and white hardcopy documents may be sent to e-mail addresses in TIFF, PDF or JPEG* formats.

Once again, not only does the PC-style QWERTY keyboard makes inputting addresses easy, right down to the ".com" button. It also enables you to attach a custom filename, subject line and text message to your outgoing e-mail. The kind of authentication that prevents recipients from mistaking your document for a computer virus or unwanted SPAM.

Documents may be sent simultaneously via fax and e-mail, depending on the recipients' preferred method. And, just as you would when sending by Outlook, you can toggle between To, Cc and Bcc.

Furthermore, any file stored on the network or your desktop may be attached to your transmission, particularly useful should you need to append essential details such as privacy policies, legal disclaimers or corporate information. File scanning sizes can be limited to reduce network congestion. Or to ensure fast delivery, one single file can be broken up into separate transmissions.



* JPEG file format is for colour scanning only

** Up to 300 with OfficeBridge

Unique intuitive touchscreen

- Large easy-to-use touchscreen
- Navigate documents through networks, e-mail and digital communication lines with ease
- A unique feature on a workgroup-sized multifunctional

Unique on a workgroup-sized all-in-one, this large backlit touchscreen provides an easy intuitive means of delivering digital documents to network folders, e-mail addresses or FTP sites. Like an in-car navigation system, it allows you to plan, track and monitor the journey of your document from start to finish.

Scan to folder? No matter how complex your network file structure, the screen makes it easy to select the folder you want.

To E-mail or FTP? A standard QWERTY keyboard not only allows you to register e-mail addresses quickly, but enables you to attach custom file names to documents.

Lengthy copy or fax jobs are reduced to simple one-touch operations with macro program keys. You can also customise the command keys on the default screen to make the whole procedure more convenient.

Scan to network folder

- Scan high-resolution colour/b&w documents directly into network folders
- Up to 20** folder shortcut locations for seamless one-touch job initiation
- Allocate customised file names for improved file retrieval

Both high-resolution colour and black and white hardcopy documents can be scanned directly into a network folder. It's as easy as that.

Firstly, this operation mirrors the 'File-Save' process on your PC, so even first-timers find it a familiar procedure. And secondly, via the touchscreen you can actually surf your way through a corporate network, viewing multiple folder levels simultaneously.

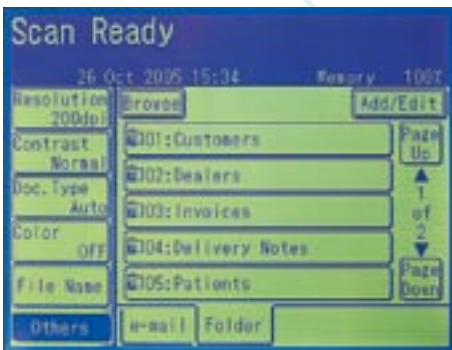
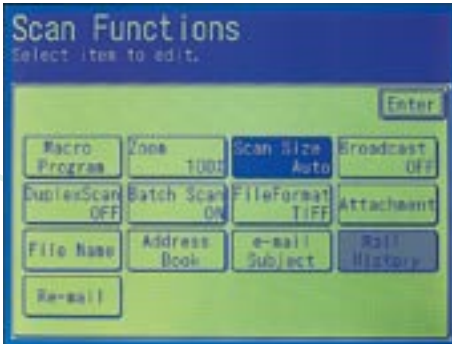
To make this process even faster, up to 20** shortcut keys can be created for one-touch scan initiation. The high-quality 600dpi images produced can be retrieved by all the standard document management systems for the purposes of archiving or record-keeping. And not only can you use the PC-style QWERTY keyboard to add a custom file name to your document, but up to 20 commonly used file names can also be stored for quick retrieval.

Scan to FTP

- Post high-resolution colour/b&w documents directly onto FTP sites
- In TIFF, PDF or JPEG* formats
- Up to 20 FTP shortcut locations allowing one-touch job initiation
- Allocate customised file names

Whether you need to upload high-resolution colour or black and white hardcopy documents, files that are too large to be sent via a traditional e-mail server can be scanned to a password-protected FTP site for sharing or storage. Documents may be posted in TIFF, PDF or JPEG* formats.

As with Scan to Network Folder, the intuitive QWERTY keyboard allows you to attach a customised file name to each scanned document, for greater file retrieval capabilities. Again, up to 20 shortcut keys can be created for one-touch scan initiation.



*JPEG file format is for colour scanning only

** 6% coverage

† 2 page cycle



All the fax, copy, print and management solutions you'll ever need

Every faxing option, Internet, desktop or walk-up, is covered. By utilising your existing e-mail server, a T.37 compliant internet fax connection avoids the need to install a VPN. For desktop faxing the PC fax interface allows you to view (and delete) sent documents, while a confirmation screen lets you check transmission time and result. And because the virus-free communication line sits off the network, you always have a dependable method of document distribution.

Copy solutions? Lengthy jobs are handled by the 80-sheet automatic document feeder. Rush jobs by an ultra-fast scanning speed and first-copy-out-time. Along with advanced features like electronic

sorting, mixed original detection and Card Copy.

Going to print? A new LED-head on the redesigned print engine provides high-resolution document output. A seamless paper-path limits curl and jamming. While standard duplexing reduces both document storage and operational expenses.

Switch them on and DHCP compliance means these machines immediately install themselves on the network. The OfficeBridge interface allows you to adjust settings, set up customised workflows and import contacts from contact management databases.

Not only are Muratec's EasyChange™ front-loading toner and drums simple to replace, avoiding the need for a service call, or excessive staff time. But at 16,000 and 30,000† pages respectively, you're sure to get outstanding value out of them long before they need to be changed.**

And the economies don't stop there. Long service intervals, a low breakdown rate, plus a 300,000 print design life adds up to a total cost of ownership with minimal impact on your bottom line.

**High-yield consumables plus high durability.
Total cost of ownership? Extremely low**



mfx2030/f560

The all-in-one document distribution centre



Digital Copier Features:

Printing Method	LED
Scanning Method	Mono and colour CCD
Print Speed (F560/mfx2030)	19 pages per minute
User Interface	Touch screen
Automatic Document Feeder	80 sheets
Paper Capacity	550 sheets (includes 50 sheet bypass tray)
Maximum Paper Capacity	1,050 sheets
Duplex Printing	1:2, 2:2, 2:1
Duplex Scanning	Yes, manual
Department Codes	100 (Copy/Fax)
Quad Access	Yes
DHCP Compliant	Yes
Ethernet	Standard 10/100 BaseT, RJ-45 connection
Network Protocol	TCP/IP
Local Connection	USB 2.0
Easy Change Consumables	Yes, front loading
Dimensions	520mm (W) x 490mm (D) x 446mm (H)
Power	230 volts AC \pm 10%, 50/60Hz
Weight	22.1kg

Scanner Features:

Scanner Protocol	TWAIN
Scanner Resolution	100dpi-600dpi
Greyscale	256 levels
Interface	USB 2.0 and ethernet standard
Scan to E-mail	Standard
File Formats	PDF, TIFF, JPEG
Scan to FTP	20
Scan to Folder	20 (300)
Default Colour Scan Speed	9 seconds
Default Mono Scan Speed	3.1 seconds
E-mail/Folder Broadcast	Yes

Printer Features:

Print Resolution	600 x 600dpi
Emulation	GDI (PCL optional)
Interface	USB 2.0
Operating Systems	Windows 98SE, ME, NT4, 2000, XP and 2003
Duplex Print Speed	5ppm
Job Cancel	Machine/Browser

Fax Features:

Modem Speed	33.3k bps
Data Compression	MH, MR, MMR, JBIG
Transmission Speed	2 seconds*
Scan Speed	1.8 seconds**
Internet fax	Yes
Memory	8MB (approx. 650 A4 pages)**
Optional Memory	Plus 32MB (total 40MB, approx. 3,370 A4 pages)**
Memory Backup	Maximum 72 hours
Address Book	300 locations (expandable to 800)
Broadcasting	330 locations (up to 30 direct dial)
Group Dialling	32 groups (expandable to 100)
LDAP Directory Support	Yes – Active Directory 2000 & 2003, Open LDAP, Linux e-directory
Fax History	10, 20 or all
Block Junk Fax	Yes, 50 locations
Secure Copy & Fax	Yes
Confirmation Report	Yes

Copier Features:

Copy Speed	19 cpm
Warm Up Time	23 seconds
First Copy Out Time (FCOT)	10 seconds
Copy Quantity	1-99
Reduction/Enlargement	25-100% (F560) / 25-400% (F560/mfx2030)
Maximum Resolution	600 x 600dpi
Default Scan Speed	2.7 seconds
Image Combination	2 in 1, 4 in 1
Electronic Sorting	Standard
Output Tray	250 sheets
Cover Page Insertion	Yes

Consumables & Options:

High Yield Toner Set	16,000 @ 6%
High Yield Drum Kit	30,000 – 2 page cycle
Paper Tray	500 Sheet Paper Cassette
Additional Memory	32MB Memory Card
PCL Printer Interface	Option
Handset	Option
2nd Telephone Line	Option
Copy Desk	Option
Mechanical Counter	Option
OfficeBridge	Option

Muratec reserve the right to change design, features and specification details without prior notice.

* Based on memory transmission of ITU-T Test Document 1

** Based on ITU-T Test Document 1 stored at normal resolution

Windows 98SE, NT, 2000, ME, XP and 2003 are registered trademarks of the Microsoft Corporation.

E&OE



Unit 23, Hewitts Industrial Estate, Elmbridge Road, Cranleigh, Surrey GU6 8LW

Tel: 0870 608 6084 Fax: 0870 240 8725 email: info@muratec.co.uk

www.muratec.co.uk