

# COMPACT, SIMPLE, CUSTOM-MADE

The MFX-1820 is probably the smartest system available at the moment. Due to its small dimensions the machine can be used as a desktop system as well as a console machine with three cassettes and cabinet.

Muratec like the machine is not only a copier. It offers printing as well as fax and scanning as standard. It covers the most important functions in every office environment.

The flexibility of this machine is extraordinary. Beside the standard functions the machine can be equipped with various options.

You want to save a lot of space in your archive and reduce your paper consumption? Use the duplex unit to print on both sides of a paper sheet. If you also want to copy both sides of a sheet without turning the sheet you can use the 50 sheet RADF.

Also the paper capacity is very extensible. There are two more paper cassettes which can be added to the machine. With this the paper capacity of the machine is extended to 800 sheets.

Network board and PCL controller are very important to add the system to your company LAN. While the network board enables network printing and network GDI scanning the PCL controller keeps your data traffic of your LAN low.

Customize your personal MFX-1820.

620mm

560mm full-scale

- Copy, Print, Fax & Scan
- 5 line LCD Display
- Paper format from A5 up to A3
- Up to 800 sheets paper capacity
- Duplex unit (optional)
- 50 sheet RADF (optional)

426mm

## MODE SWITCH

Easy selection of copy, fax or scan with just one button.

## 5 LINE DISPLAY

The big 5 line LCD display is unique in its segment. It shows twice as much information as its competitors.

## SOFT KEYS

Soft keys are programmable user keys. The most important functions can be programmed here, so it is as easy as possible for the user to use them.

## INTERRUPT KEY

You have an urgent copy job but the machine is printing at the moment a big print job? Press the interrupt key to slot in your urgent job.

## ENERGY SAFE MODE

We respect the environment. Due to this there is an energy save button on the panel to reduce the power consumption as much as possible.

## ECOLOGICAL AND ENERGY SAVING

The MFX-1820 is not just the perfect partner for your daily business but also very environment friendly. The machine keeps the strict guidelines of Energy-Star as well as the special requirements of the German Blue Angel. With this the MFX-1820 does not only save money but also keep the environment in conscious.

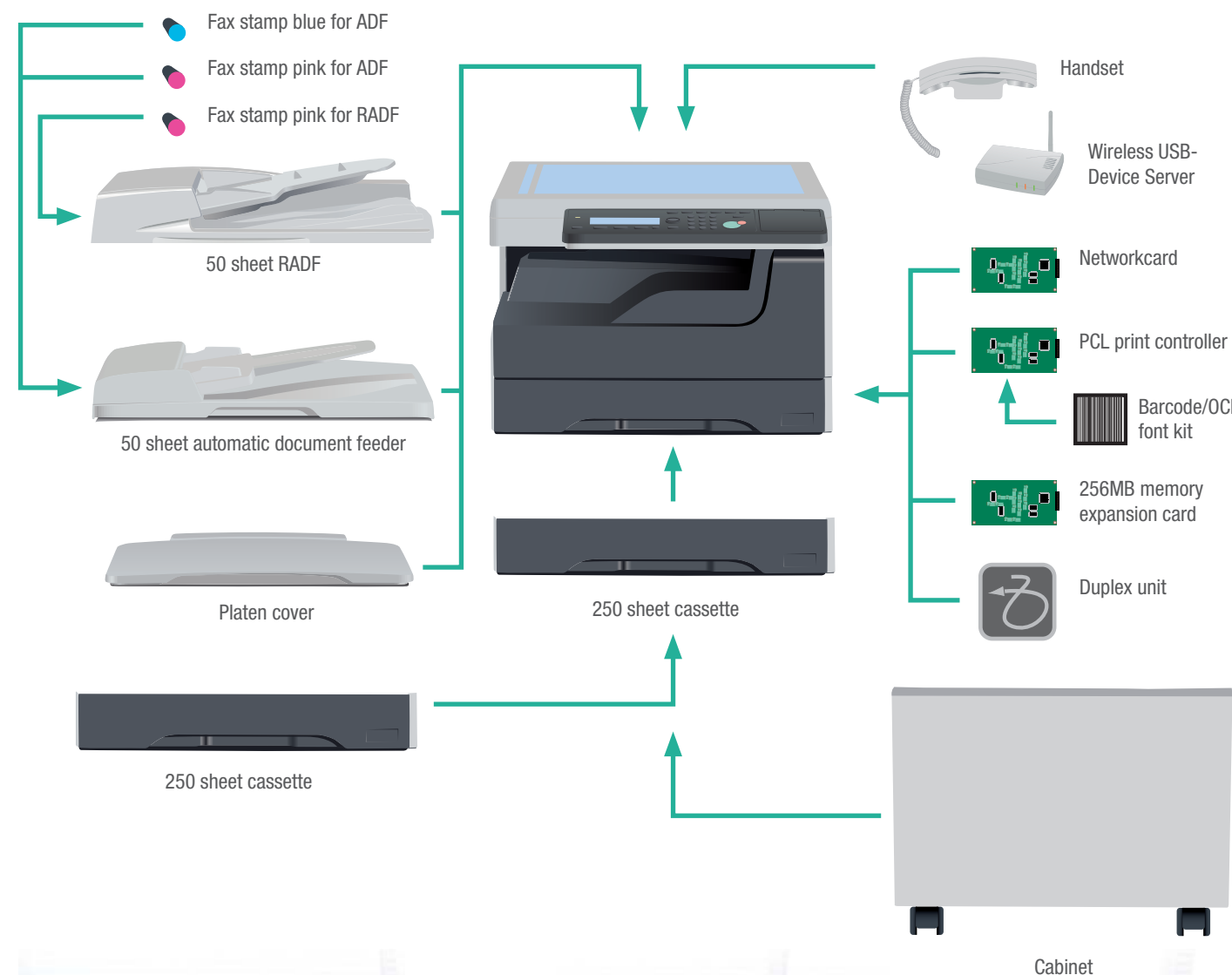


### UI Project

MURATEC's Usability Improvement (UI) Project makes it easy for users to operate our products.



# ALL YOU NEED



## GENERAL FEATURES

Printing/Copying speed 18 pages per minute  
 Printing method LED  
 Grey scales 256  
 Paper feeder 1 x 250 sheet cassette (A5-A3, 60-90 g/m<sup>2</sup>), 50 sheet Bypass (A6-A3, 60-120 g/m<sup>2</sup>)  
 Max.: 3 x 250 sheet cassette

Warm up time 20 seconds or less  
 Display 5 lines LCD Display  
 Simultaneous function Quad Access  
 Interface Standard: USB  
 Option: Ethernet 10/100 BaseT

Network protocol TCP/IP  
 Operating systems Windows 2K, XP, XP 64, Vista, Vista 64, Win 7, Server 2003(x86/x64), Server 2008(x86/x64)

Dimensions 560 x 426 x 624 mm (BxHxD with platen cover and 1 cassette)

Weight 29,5 Kg (with platen cover and 1 cassette)

Power 220-240 VAC, 50/60Hz

## COPY

RADF (optional) 50 sheets (A5-A3, 52-105 g/m<sup>2</sup>)

ADF (optional) 50 sheets (A5-A3, 52-105 g/m<sup>2</sup>)

Copy quantity 1-999

FCOT (First Copy Output Time) 6.5 seconds<sup>\*1</sup>

Zoom 25-200% (1% steps)

Resolution 600 x 600 dpi

Copy functions Electronical Sorting, Cross-Sorting, Rotate Copy, Copy Reservation, Duplex Copy (optional), Booklet Copy (optional), 2/4/8 in 1, Book Copy, Card Copy, Reduce Background

## PRINT

Controller

Resolution

Print functions

Standard: GDI  
 Option: PCL6/5e  
 600 x 600 dpi  
 Duplex Print (optional), Booklet Print (optional), Image Combining, Electronical Sorting, Cross Sorting, Job Cancel

## SCAN

Type of scanning

Resolution

Scan speed

Standard: B/W TWAIN  
 Optional: B/W Network-TWAIN  
 600 / 300 / 200 dpi  
 42 Images/minute (A4 LEF, 300 dpi, from ADF)

## FAX

Modem speed

Data compression

Transmission speed

Memory

Memory backup

Broadcasting

Group dialing

Fax history

Fax functions

33,6 Kbps  
 MH, MR, MMR, JBIG  
 2 second  
 64 MB (1,280 A4 pages)<sup>\*2</sup>  
 72 hours  
 530 addresses (direct dial: 30)  
 32 Groups  
 100  
 Block Junk Fax, Fax Forwarding, Dial Double-Push Function, Security Reception, Rotate Transmission/Reception, Confirmation Report

## OPTIONS

Platen cover, ADF, RADF, duplex unit, PCL controller, network card, 256MB memory expansion card, 250 sheet cassette, fax stamp, handset, wireless USB device server, cabinet



All data relating to the paper capacities of the document feeder, the bypass tray and the paper cassettes apply to paper weighing 80 g/m<sup>2</sup> unless expressly stated otherwise.

All data relating to the speed of printing, copying, scanning or faxing apply to paper of an A4 format unless expressly stated otherwise.

Muratec reserve the right to change design, features and specification details without prior notice.

Some brand or product are registered trademarks or product titles of their respective manufacturers. Muratec does not accept any liability or guarantee for these products.

Windows 2000, ME, XP, 2003 and Vista are registered trademarks of the Microsoft Corporation. E&OE

<sup>\*1</sup> From FBS with 1st cassette selection.

<sup>\*2</sup> Based on ITU-T Test Document 1 stored at normal resolution.



# MFX-1820



**MURATEC EUROPE GmbH**  
 Hanns-Martin-Schleyer-Str. 3  
 47877 Willich, GERMANY  
[www.muratec-europe.de](http://www.muratec-europe.de)